

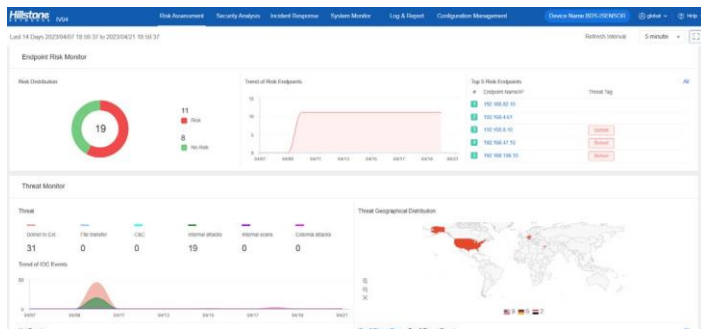
Hillstone Network Detection and Response



Hillstone Network Detection and Response (NDR) provides a robust solution for detecting and responding to sophisticated attacks like ransomware and crypto-mining malware. Hillstone NDR, with its product, the Breach Detection System (BDS), combines proven methods, such as signature-based detection and threat intelligence, with advanced machine learning to analyze user behavior and uncover hidden threats. Once a threat is detected, Hillstone NDR provides deep threat hunting and visibility, helping security administrators quickly identify Indicators of Compromise (IOCs), locate compromised hosts, and reconstruct the entire attack chain. For a complete defense, it integrates with both Hillstone and third-party Next-Generation Firewalls (NGFWs), as well as our iSource XDR system, to automatically mitigate threats and ensure your enterprise assets are comprehensively protected.

Product Highlights

Comprehensive Threat Correlation Analytics for Advanced Threat Detection



Cyber attackers have become ever more sophisticated, using targeted, persistent, stealthy and multi-phased attacks, which can easily evade perimeter detection. Hillstone BDS boasts a diverse range of detection capabilities, including Advanced Threat Detection (ATD), Abnormal Behavior Detection (ABD), deception threat detection, intrusion and attack detection, virus and spam detection, and botnet C&C detection. Hillstone's threat correlation platform analyzes the details of the relationships of each individual suspicious threat event as well as other contextual information within the network, to connect the dots and provide accurate and effective malware and attack detection with high confidence levels.

Product Highlights (Continued)

Real-time Threat Monitoring for Critical Servers and Hosts



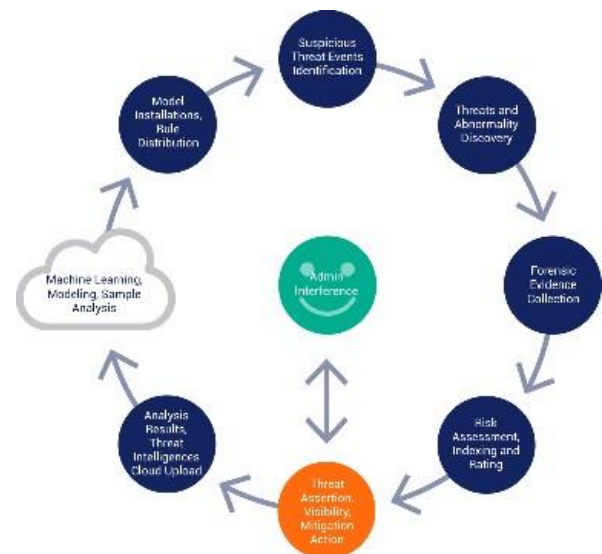
Hillstone NDR focuses on protecting critical servers within the intranet, detecting unknown and 0-day threat attacks and finding abnormal network and application level activities of server and host machines. Once a threat or an abnormal behavior is detected, Hillstone NDR will perform threat or behavioral analysis and use topology-based graphic presentations to provide extensive visibility into the threat details and behavioral abnormalities. This gives security admins unprecedented insights into the attack progress, traffic trending in each direction, as well as the entire network risk assessment.

Complete Indicator of Compromises and Cyber Attack Chain

IOCs events are threat events detected during the post breach attack. They are identified among large numbers of the threat

attacks in the network that are directly associated with the protected server or host. IOCs are typically seen as threat activities with higher risk and with a high confidence level that a server or host is being compromised and that poses a potentially bigger threat to the critical assets within the corporate network. To effectively detect IOCs and perform deep threat detection on these IOCs is critical in throttling the goal of stealing important data from critical assets, and preventing a threat attack from further spreading within the network. Hillstone NDR drills down and surfaces more threat analysis and intelligence on these IOC events, reconstructing the attack chain based on these IOCs and correlating other threat events associated with these IOCs within time and space spectrums.

Rich Forensic Information and Preemptive Mitigation



Server Detail									
Intranet Asset (IP)		192.168.87.10(192.168.87.10)		Active state		Inactive		Risk Index	
Threat Tag		Botnet						62	
Threat		Event Highlights		Traffic Monitor				Export Report	
External attacks		External		Internal		Internal scans			
Botnet connect to external									
C&C									
File transfer									
Detection Period		Last 14 Days		Behavior Category		All		Clean up server threat events	
Name	Behavior	Threat Tag	Type	Sev	Source	Destination	Detected at	Adm	
1	Botnet C&C	Botnet connect to external	Malware - Trojan	High	192.168.87.10	10.55.99.1	2023/04/10 15:29:41	Uncom	
2	Ransomware Act...	Internal attacks	Malware - Trojan	Critical	192.168.87.10	10.55.99.1	2023/04/10 15:29:38	Uncom	
3	Ransomware Act...	Internal attacks	Malware - Trojan	Critical	192.168.87.10	10.55.99.1	2023/04/10 15:29:36	Uncom	
4	Botnet C&C	Botnet connect to external	Malware - Trojan	High	192.168.87.10	10.55.99.1	2023/04/10 15:09:44	Uncom	
5	Ransomware Act...	Internal attacks	Malware - Trojan	Critical	192.168.87.10	10.55.99.1	2023/04/10 15:09:42	Uncom	

Hillstone NDR conducts threat mitigation with conjunction of Hillstone A-Series NGFW, and X-Series data center NGFW, as well as third-party NGFW devices. After the security admin or network operators analyze and validate threat alerts, they can add threat elements such as IP addresses, type of threats etc., to the blacklist or security policies, and then synchronize them to the firewalls so that future attacks from the same breeds or malware family can be blocked at the network perimeter. This prevents future attacks from spreading to broader network territories.

Features

Abnormal Behavior Detection

- Behavior modeling based on L3-L7 baseline traffic to reveal anomalous network behavior, such as HTTP scanning, Spider, SPAM
- Detect DDoS including Flood, Sockstress, zip of death, reflect, DNS query, SSL and application DDoS
- Support inspection of encrypted tunneling traffic for unknown applications
- Real-time, online, abnormal behavior model database update
- Support the detection of RDP/VNC/SMB/SSH/FTP brute force attack, TOR based suspicious HTTP requests
- Support detecting and alerting on remote access software

Advanced Threat Detection

- Behavior-based advanced malware detection
- Detect more than 2,000 known and unknown malware families including Virus, Worm, Trojan, Overflow, etc.
- Real-time, online, malware behavior model database update
- Detect major ransomware and cryptomining malware
- Support threat detection on encrypted traffic without decryption
- Support threat detection for encrypted HTTPS, SMTPS, POP3S, and IMAPS traffic by decryption in TAP mode

Threat Correlation Analytics

- Correlation among unknown threats, abnormal behavior and application behavior to discover potential threat or attacks
- Multi-dimension correlation rules, automatic daily update from the cloud
- Deception Threat Detection
- Local deception engine with regular deception models update
- Simulate to Web, Doc or Database Servers, support protocols including FTP, HTTP, MYSQL, SSH and TELNET

Intrusion Detection

- 35,000+ signatures, protocol anomaly detection and rate-based detection
- Custom signatures, manual, automatic push or pull signature updates, integrated threat encyclopedia
- Over 20 types of protocols anomaly detection, including HTTP, SMTP, IMAP, POP3, VOIP, NETBIOS, VxLAN, MPLS, etc
- Support for buffer overflow, SQL injection and cross-site scripting attack detection
- Support weak password detection for protocols of FTP/HTTP/SMT/
- POP3/IMAP/TELNET/Cassandra/DB2/IRC/NNTP/PGSQL/REDIS/
- Rexec/Rlogin/ RTSP/Socket5/Sybase
- Support reverse shell detection
- Support capturing complete attack packets
- Support plaintext password detection in HTTP traffic
- Support brute-force detection for over 30 applications/protocols

Antivirus

- Over 15 million virus signature database and online real-time update
- Support compressed file scan
- Support configuring MD5 and URL whitelists
- Support dual Antivirus detection engines, including MD5-based detection and AI-powered detection

Anti-Spam

- Real-time spam classification and prevention
- Confirmed Spam, Suspected Spam, Bulk Spam, Valid Bulk
- Protection regardless of the language, format, or content of the message
- Support both SMTP and POP3 email protocols
- Whitelists to allow emails from trusted domain/email addresses

Cloud-Sandbox

- Upload malicious files to cloud sandbox for analysis
- Support protocols including HTTP, SMTP, POP3, IMAP4 and FTP
- Support file types including PE, APK, JAR, MS-Office, PDF, SWF, RAR, ZIP
- Provide complete behavior analysis report for malicious files
- Global threat intelligence sharing, real-time threat blocking
- Multiple static detection engines quickly filter normal files and known threats
- Unknown threat visualization based on logs, reports, monitoring information, file behavior reports

Attack Detection

- Abnormal protocol attack detection
- Support DoS/DDoS detection, including SYN Flood, DNS Query Flood, with intelligent DDoS mitigation based on baseline learning
- ARP attack detection
- Support WEB attack detection based on WAF rules for abnormal HTTP protocol, DDoS attack, injection attack, cross-site attack, special vulnerability attack, information leakage, detection access, malicious software, illegal access to resources
- WEB detection function whitelist

Application Identification

- Over 4,000 applications, including IM, p2p, file transfer, email, online games, media streaming, etc
- Multi-dimension application statistic based on zones, interface, location, user, and IP address
- Support for Android, IOS mobile applications

Threat Mitigation

- Admin actions to change threat events status, open, false positive, fixed, ignore, confirmed
- One-click cleanup of server/computer threat and reevaluation of host security
- Threat events whitelist, including threat name, source/destination IP, hit count, etc.
- Support integration with Hillstone and third-party firewalls to block threats
- Sysmon endpoint service integration
- Threat hunting
- Support MITRE ATT&CK® framework mapping
- Support identification of attackers and victims in threat logs

ARP Spoofing Detection

- Prevent ARP spoofing by IP-MAC binding and APR packet inspection

Monitoring

- Dynamic, real-time dashboard status and drill-in monitoring widgets
- Intranet risk monitoring projection
- Overview of internal network risk status, including TOP5 risk server/computer list and threat trends, critical assets risk status, host risk status, threat severity and type, external attack geo-locations, etc
- Visual details of threat status for critical assets and other risky hosts, including risk level, risk certainty, attack geo- location, attack chain uncovering and other statistical information
- Support active scanning for assets. The scanning results can be uploaded to iSource
- Visual details of network threat events, including threat analysis, knowledge base, MITRE ATT&CK® tactic details, MITRE ATT&CK® technique details, history and topology
- Send alarm via Email and Trap
- Cloud-based threat intelligence push service

Logs & Reporting

- Three predefined reports: Security, Flow and System reports
- Support user defined reporting
- Reports can be exported in PDF, Word and HTML format via Email and FTP
- Logs, including events, networks, threats, and configuration logs

Features (Continued)

- Logs can be exported via Syslog or Email

Administration

- Monitoring internal network hosts and servers, identifying name, operation system, browser, type, and network threat statistic record
- Management access: HTTP/HTTPS, SSH, telnet, console
- Device condition alerts, including CPU usage, memory usage, disc usage, new session and concurrent sessions, interface bandwidth, chassis temperature and CPU temperature
- Alerts based on application bandwidth and new connection
- Support for three types of alerts: email, text message, trap
- Unknown threat visualization based on logs, reports, monitoring information, file behavior reports
- Seamless integration with 3rd party network management system
- Support High Availability

Botnet C&C Detection

- Support discovering intranet botnet host by monitoring C&C connections
- Support detecting C&C IP and domain name in TCP, HTTP and DNS traffic

- Support auto-update the botnet C&C defense signature database
- Support detecting C & C channels based on Domain Generation Algorithms (DGA)
- Support importing threat intelligence through standardized protocols including STIX, OpenIOC, and JSON

RESTful APIs

- Support standard RESTful APIs for accessing hardware/system/threat event information

Centralized Management

- Support registering devices to Hillstone Security Management Platform (HSM)
- Support 24/7 monitoring of multiple devices, traffic and threat via Hillstone CloudView (web or mobile)
- Support uploading threat logs, evidential packets, NetFlow, metadata to Hillstone iSource XDR for threat analysis
- Support integration with third- party threat Intelligence to detect malicious files, URLs and IP addresses

Specifications

I-1870-IN






I-2860-IN



Breach Detection Throughput ⁽¹⁾	1 Gbps	2 Gbps
New Sessions/s ⁽²⁾	25,000	50,000
Maximum Concurrent Sessions ⁽²⁾	750,000	1.5 Million
Form Factor	1 U	1 U
Storage	1T SSD	1T SSD
Management Ports	2 x USB port 1 x RJ45 port 1 x MGT	2 x USB port 1 x RJ45 port 2 x MGT
Fixed I/O Ports	2 x SFP+ 8 x SFP 8 x GE	2 x SFP+ 8 x SFP 16 x GE
Available Slots for Expansion Modules	N/A	1 x Generic Slot
Expansion Module Option	N/A	IOC-A-4SFP+-IN
Power Supply	AC 100-240V, 50/60Hz	AC 100-240V, 50/60Hz
Power Specification	50W, Single AC	100W, Dual AC Redundant
Dimension (W×D×H, mm)	17.2 x 12.6 x 1.7 in (436 x 320 x 44mm)	17.2 x 17.2 x 1.7 in (436 x 437 x 44mm)
Weight	9 lb (4.1 kg)	18.7 lb (8.5 kg)
Temperature	32-104°F (0-40°C)	32-104°F (0-40°C)
Relative Humidity	10-95% (no dew)	10-95% (no dew)

Specifications (Continued)

	I-3860-IN	I-5850-IN	I-5860-IN
			
Breach Detection Throughput ⁽¹⁾	5 Gbps	10 Gbps	10 Gbps
New Sessions/s ⁽²⁾	120,000	430,000	500,000
Maximum Concurrent Sessions ⁽²⁾	3 Million	6 Million	6 Million
Form Factor	1 U	2 U	1 U
Storage	1T SSD	1T HDD	2T SSD
Management Ports	2 x USB port 1 x RJ45 port 3 x MGT	2 x USB port, 1 x RJ45 port, 2 x MGT	2 x USB port 1 x RJ45 port 2 x MGT
Fixed I/O Ports	6 x SFP+ 16 x SFP 8 x GE	N/A	2 x QSFP+ 16 x SFP+ 8 x GE
Available Slots for Expansion Modules	1 x Generic Slot	4 x Generic Slot	1 x Generic Slot
Expansion Module Option	IOC-A-4SFP+IN	IOC-BDS-8GE-HIN, IOC-BDS-8SFP-HIN, IOC-BDS-4SFP+HIN	IOC-A-4SFP+IN
Power Supply	AC 100-240V, 50/60Hz	AC 100 -240V, 50/60Hz	AC 100-240V, 50/60Hz
Power Specification	289W, Dual AC Redundant	350W, Dual AC Redundant	382W, Dual AC Redundant
Dimension (WxDxH, mm)	17.2 x 17.2 x 1.7 in (436 x 437 x 44mm)	16.9 x 19.7 x 3.5 in (430 x 500 x 88mm)	17.2 x 17.2 x 1.7 in (436 x 437 x 44mm)
Weight	22.5 lb (10.2 kg)	26.5 lb (12 kg)	22.5 lb (10.2 kg)
Temperature	32-104°F (0-40°C)	32-104°F (0-40°C)	32-104°F (0-40°C)
Relative Humidity	10-95% (no dew)	5-85% (no dew)	10-95% (no dew)

Specification and Minimum Hardware Configuration

	IV04-IN	IV08-IN
Breach Detection Throughput ⁽³⁾	Up to 1.5 Gbps	Up to 3 Gbps
CPU Support (Min.)	4 Core	8 Core
Memory (Min.)	8G	16G
Storage (Min.)	100G	100G
System Requirement	KVM / Vmware ESXi version 6.5 or above	KVM / Vmware ESXi version 6.5 or above
Public Cloud Support	Alibaba Cloud / Tencent Cloud	Alibaba Cloud / Tencent Cloud

Network Interface Card Supported

	SR-IOV	All NICs except SR-IOV
KVM	√ (only SR-IOV X710 can be supported)	√
Vmware	×	√

Module Options

Module	IOC-S-4SFP-L-IN	IOC-S-4GE-B-IN
I/O Ports	4 x SFP Ports	4 x GE Bypass Ports
Dimension	1U (Occupies 1 generic slot)	1U (Occupies 1 generic slot)
Weight	0.22 lb (0.1 kg)	0.33 lb (0.15 kg)

Module	IOC-BDS-8GE-H-IN	IOC-BDS-8SFP-H-IN	IOC-BDS-4SFP+-H-IN	IOC-A-4SFP+-IN
I/O Ports	8 x GE Ports	8 x SFP Ports	4 x SFP+ Ports	4 x SFP+, SFP+ module not included
Dimension	1U (Occupies 1 generic slot)	1U (Occupies 1 generic slot)	1U (Occupies 1 generic slot)	1U
Weight	0.55 lb (0.25 kg)	0.55 lb (0.25 kg)	0.44 lb (0.2 kg)	2.09 lb (0.96 kg)

Recommended Sysmon Configuration

Specification	Sysmon Server	Sysmon Client
CPU	4 Core	\
Memory	16G	1G
Storage	1T HDD, extendable	40G HDD
Installation Package	OVF Mirror	MSI Service Program
System Requirement	VMware ESXi	Windows 7 / Windows Server 2008 or above

NOTES:

- (1) Breach detection throughput is measured under bidirectional HTTP traffic with all threat detection features enabled;
- (2) The data reflects performance with web attack detection disabled. Performance may vary if it's enabled;
- (3) Breach detection throughput varies based on hardware configuration.
- Unless specified otherwise, all performance are based on BDS 5.0. Results may vary based on BDS version and deployment.